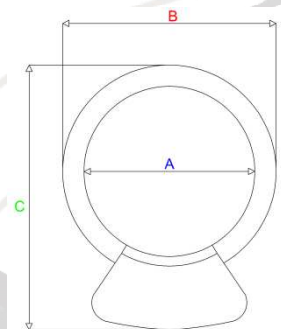


# GENNARINO

## WOOD

Small sizes and small weight, this model of oven with gas alimentation is available with only two different cooking floor size

- Cooking chamber made of refractory bricks
- Fully insulated
- Support frame and front enclosure of stainless steel
- Marble shelf
- Inox door
- External covering of ceramic mosaic tiles.
- Alimentation : wood
- Suggested working teemperature 400/450°C
- Flue output :Ø 150 mm.
- Smokes temperature output : 190°C
- Extract air flow : 650 Mc/h (at starting)  
500 Mc/h (at fully operating)
- Venting : Natural draft



MODELLO MODEL	N.PIZZE N.PIZZAS	DIMENSIONI - SIZES						ALTEZZA HEIGHT		PESO WEIGHT	
		A		B		C		CM	IN	KG	LBS
		CM	IN	CM	IN	CM	IN	CM	IN	KG	LBS
GENNARINO 80	2	80	31,5	113	44,5	140	55,1	205	80,7	480	1058
GENNARINO 100	3	100	39,4	133	52,4	165	65	205	80,7	600	1322

Specification subject to change without notice